

Installation Guide

Trados Studio 2021 SR2

November 2021





Legal notice

Copyright and trademark information relating to this product release.

Copyright © 2000–2021 SDL as part of the RWS Holdings Plc group of companies ("RWS Group").

SDL means SDL Limited and its subsidiaries and affiliates. All intellectual property rights contained herein are the sole and exclusive rights of SDL. All references to SDL shall mean SDL Limited and its subsidiaries and affiliates details of which can be obtained upon written request.

All rights reserved. Unless explicitly stated otherwise, all intellectual property rights including those in copyright in the content of this website and documentation are owned by or controlled for these purposes by SDL. Except as otherwise expressly permitted hereunder or in accordance with copyright legislation, the content of this site, and/or the documentation may not be copied, reproduced, re-published, downloaded, posted, broadcast or transmitted in any way without the express written permission of SDL.

Trados Studio is a registered trademark of SDL. All other trademarks are the property of their respective owners. The names of other companies and products mentioned herein may be the trademarks of their respective owners. Unless stated to the contrary, no association with any other company or product is intended or should be inferred.

This product may include open source or similar third-party software, details of which can be found by clicking the following link: "Acknowledgments." on page 27.

Although RWS Group takes all reasonable measures to provide accurate and comprehensive information about the product, this information is provided as-is and all warranties, conditions or other terms concerning the documentation whether express or implied by statute, common law or otherwise (including those relating to satisfactory quality and fitness for purposes) are excluded to the extent permitted by law.

To the maximum extent permitted by law, RWS Group shall not be liable in contract, tort (including negligence or breach of statutory duty) or otherwise for any loss, injury, claim liability or damage of any kind or arising out of, or in connection with, the use or performance of the Software Documentation even if such losses and/or damages were foreseen, foreseeable or known, for: (a) loss of, damage to or corruption of data, (b) economic loss, (c) loss of actual or anticipated profits, (d) loss of business revenue, (e) loss of anticipated savings, (f) loss of business, (g) loss of opportunity, (h) loss of goodwill, or (i) any indirect, special, incidental or consequential loss or damage howsoever caused.

All Third Party Software is licensed "as is." Licensor makes no warranties, express, implied, statutory or otherwise with respect to the Third Party Software, and expressly disclaims all implied warranties of non-infringement, merchantability and fitness for a particular purpose. **In no event will Licensor be liable for any damages, including loss of data, lost profits, cost of cover or other special, incidental, consequential, direct, actual, general or indirect damages arising from the use of the Third Party Software or accompanying materials, however caused and on any theory of liability. This limitation will apply even if Licensor has been advised of the possibility of such damage. The parties acknowledge that this is a reasonable allocation of risk.**

Information in this documentation, including any URL and other Internet website references, is subject to change without notice. Without limiting the rights under copyright, no part of this may be reproduced, stored in or introduced into a retrieval system, or transmitted in any form or by any means (electronic, mechanical, photocopying, recording, or otherwise), or for any purpose, without the express written permission of RWS Group.

Contents

1	Legal notice	3
2	Introducing Trados Studio 2021	1
	About this guide	2
	Audience for this guide	2
	Related documentation	2
	About Trados Studio	2
	About Trados Studio 2021	3
	Licensing	3
	Trial license	4
	Activating your product	4
	Trados Studio editions	5
	Subscription plans	5
	Perpetual licenses	6
	Upgrade and Compatibility Information	11
	Information for upgraders	11
	Trados Studio project and package compatibility	11
	Translation Memory Compatibility	11
	Software	11
	Server-based translation memories	11
	Local (file-based) translation memories	11
	MultiTerm compatibility	12
	Software	12
	Server-based termbases	12
	Local (file-based) termbases	12
3	Installing Trados Studio 2021	13
	Overview	14
	System requirements	14
	Operating systems	15
	Software and Internet browsers	16
	Internet Browser	16
	Digital certificate requirements	16
	Upgrading from an Earlier Version of Trados Studio	17
	About the Trados Studio 2021 installer	17
	Prerequisite software	17

Installation location	18
About the Trados Studio 2021 installation	18
Installing Trados Studio 2021	18
Downloading the installer	19
Running the installer	19
After Installation	19
Logging an Installation	20
Software updates	20
Temporary directory	20
Individual User Software Updates	20
Group Policy Software Updates	20
Logging a Software Update	23
Maintaining Your Installation	24
Repairing your Trados Studio 2021 Installation	24
Removing Trados Studio 2021	24
Customer support	24
What's next?	25
4 Acknowledgments	27



Introducing Trados Studio 2021

This chapter gives you an overview of the Trados Studio client installation procedure and the Trados Studio 2021 system.

About this guide

This guide describes how to install and license Trados Studio 2021 desktop application.

This guide does NOT cover:

- Installing the server components of Trados Studio 2021.
- Installing the MultiTerm 2021 application.
- Converting or upgrading existing translation resources to use with Trados Studio 2021.
- Using Trados Studio 2021.

Audience for this guide

This guide is for anyone who is installing any edition of Trados Studio 2021 on a personal computer.

Related documentation

- [Trados Studio 2021 SR2 Migration Guide](#) - contains information about converting or upgrading existing translation resources from SDL Trados 2007 and SDLX so that you can work with them in Trados Studio 2021 SR2.
- [Trados GroupShare 2020 SR1 Installation Guide](#) - contains information about installing the server components of Trados Studio 2021 and upgrading server-based translation memories from Trados Studio 2009 to the 2021 SR2 format.
- [Trados Studio 2021 SR2 Help](#) - contains information about using Trados Studio 2021 SR2.
- [Translating and Reviewing Documents Quick Start Guide](#) - contains information for translators and reviewers. It focuses on how to translate and review files.
- [Project Management Quick Start Guide](#) - contains information for project managers. It focuses on the project lifecycle.
- [Translation Memory Management Quick Start Guide](#) - contains information for users who create and maintain translation memories.
- [MultiTerm 2021 Installation Guide](#) - contains information about installing MultiTerm 2021.

About Trados Studio

Trados Studio is an integrated environment that enables translation teams to share translation tools, resources and project files.

Resources such as translation memories can be shared over an intranet or over the Internet.

You can also use Trados Studio as a single-user tool where the Trados Studio software and translation memories are located on your computer and there is no interaction with translation memories or projects

over an intranet or the Internet. Single-users can open and work with project packages created in other Trados Studio installations.

About Trados Studio 2021

Trados Studio 2021 contains tools that enable you to:

- Create and manage translation projects, including cloud projects.
- Create and maintain local and server-based translation memories.
- Open documents and translate them.
- Open server-based and local translation memories and apply them to documents.
- Open local and server-based termbases and apply them to documents.
- Update translation memories and termbases during translation.
- Align existing translated documents to generate translation memory content.

In a setup that includes server components, Trados Studio client communicates with server components through an intranet (through a LAN or WAN) or through the Internet using Trados GroupShare . Trados GroupShare includes the following components:

- Project Server
- TM Server
- MultiTerm Server

Licensing

When you purchase any RWS software, you must activate it before you can use it. Activation means that the product is licensed for use on the machine where it is installed.

Important: You must uninstall SDL Licensing Server Manager v1.0 before installing SDL Licensing Server Manager v2.0. The Trados Studio installer will stop if you do not uninstall SDL Licensing Server Manager v1.0.

Trados Studio 2021 uses the following license types:

Single-user license

You can perform online activation with this type of license using an activation code. You can download the activation code from the **My Account** area on the RWS website when you purchase the software or at a later date. If you do not have access to the Internet on the computer where you have the software installed, you can still activate your product using offline activation.

Network license

The administrator performs activation using an activation code on a license server, on a shared network. You can then connect to the server and request a license.

Subscription license

You can also activate Trados Studio 2021 and later with a subscription license available for one of the following RWS cloud offerings:

- Trados Enterprise
- Trados Live Team
- Trados Live Essential

An Trados Studio subscription provides an alternative to permanent licenses and includes Trados Live Essential with the following benefits:

- access to cloud projects
- lower entry price and the ability to pay-as-you-go
- guaranteed updates

Trial license

Trados Studio 2021 includes a 30-days trial license.

Available features

During the product's trial period, you can try all the features that the full-fledged edition of that product has to offer (for example the Trados Studio Professional edition).

After the trial period expires, if you decide to purchase another edition of the product that better suits your needs (for example the Trados Studio Starter edition), bear in mind that some of the features available in the Trial Mode will not be available after you activate your license.

For more information about the differences between the available Trados Studio editions, consult this link: [Trados Studio editions comparison table](#).

Product activation during the trial period

To continue using the product after the trial period expires, you must purchase a permanent or subscription licence from the RWS Website and then activate your product.

If you are using a trial license and you want to switch to an activate license, open the **Help** tab > **Product activation** and choose the **Perpetual License** or **Language Cloud Subscription** tab. If you activate your product during its 30-day trial period and then deactivate the license, you will be able to continue using the product for the remaining trial period.

Activating your product

To learn how you can activate Trados Studio, read the instructions from the [Licensing Help](#).

Trados Studio editions

Starting with Trados Studio 2021, you can also activate Trados Studio either with a perpetual or a subscription license. For organizations whose translation team needs to scale rapidly or have varying workloads, purchasing Studio 2021 licenses on an annual subscription may be the best option. Other companies who may prefer to fix their costs at the outset may prefer to opt for perpetual licenses.

Perpetual licenses

With a perpetual license, the initial cost may be higher. However, the license does not expire and you own the software outright, meaning you may use it for many years to come.

You will receive updates and service releases for Studio 2021 for as long as RWS supports the version. Should you wish to upgrade to future editions of Studio, you'll need to pay for the upgrade.

Access to RWS Support is available through a Support and Maintenance Agreement (SMA) at an additional cost.

Subscription licenses

When you purchase an annual subscription for Trados Studio 2021, the initial cost may often be lower. However, you do not own the software outright, and access to the software is for the duration of your subscription. During your subscription, you will receive updates and service releases. You'll also receive upgrades to future editions of Trados Studio, ensuring you continue to benefit from the new functionality and enhancements when released.

With a subscription, you will have the flexibility to easily add extra licenses for new team members and also cancel at the end of your contract. Access to RWS Support is available at an additional cost.

Subscription plans

The following subscriptions are available to meet the different needs of freelance translators, Language Service Providers and corporate or government customers:

Subscription type	Availability	Cloud benefits
Trados Live Essential Freelance	Free with Trados 2021 Freelance and Freelance Plus	<ul style="list-style-type: none"> • Cloud storage and resources • Access to the Online Editor • Web project Dashboard • Access to Trados Live mobile app
Trados Live Essential Professional	Free with Trados 2021 Professional and Professional Network (one Trados Live subscription for every network license)	
Trados Live Team Starter	Purchase from Sales representatives	All Essential benefits + sharing capabilities
Trados Live Team Standard	Purchase from Sales representatives	
Trados Translation Management System	Purchase from Sales representatives	All Team benefits + complex workflow capabilities

For more information, see [Cloud offerings and subscriptions](#) in the online Help.

Perpetual licenses

When you purchase a perpetual license for Studio 2021, the initial cost may be higher. However, the license does not expire and you own the software outright, meaning you may use it for many years to come.

You will receive updates and service releases for Studio 2021 for as long as RWS supports the version. Should you wish to upgrade to future editions of Studio, you'll need to pay for the upgrade. Access to RWS Support is available through a Support and Maintenance Agreement (SMA) at an additional cost. The following perpetual licenses are available:

- Professional
- Freelance
- Starter
- Express
- Workgroup

Professional

Trados Studio Professional is the complete package that includes all available features.

If you are also working with Trados GroupShare the server component of Trados Studio, this edition gives you project manager functionality designed for use in GroupShare environments.

Freelance

Trados Studio Freelance is limited in the following ways:

- You can only work with three target languages. However, you can open, translate and create projects in any language. Any new multilingual project that you create can include up to three target languages. If you need to use more than three target languages, create separate projects.
- You cannot use Trados Studio Freelance on a computer that is part of a domain-based corporate network.
- You can open and work with project packages, but you cannot create them.
- You can add and edit translation quality assessments, but you cannot create a Translation Quality Assessment configuration for a project.
- You cannot create custom task sequences.
- You cannot apply PerfectMatch to project files.
- You cannot publish GroupShare server-based projects.

Starter and Express

Trados Studio Starter and Trados Studio Express both have similar functionality to Freelance.

What you can do in Starter and Express depends on which workflow you are using. The following list shows the key tasks that you can perform in each workflow. Express also allows you to run Studio as part of a domain-based corporate network and have use of an unlimited number of languages.

Features	Express	Starter	Freelance	Workgroup	Professional
Single file translation					
Unlimited language support	-	-	Up to three target languages for new projects	YES	YES
Single file translation - all file formats	NO	YES	YES	YES	YES
Create file-based TMs	NO	NO	YES	NO	YES
Unlimited file-based TM size	NO *unlimited when receiving packages	NO * 5,000 Translation Units (app. 50,000 words) for single file translation; unlimited when receiving packages	YES	YES	YES
Open multiple TMs at a time	NO	NO	YES	YES	YES
Open unlimited termbases	YES *only if part of a package	YES *only if part of a package	YES	YES	YES
Open local project	NO	NO	YES	YES	YES
Multiple file/ language translation					
New project wizard	NO	NO	YES	NO	YES
Full batch task functionality	NO	NO	YES	NO	YES
Custom task sequences	NO	NO	NO	YES	YES
SDL Package support					
Create SDL Packages	NO	NO	NO	YES	YES

Features	Express	Starter	Freelance	Workgroup	Professional
Email SDL Packages	NO	NO	NO	YES	YES
Open SDL Packages from Professional version without restrictions	NO	YES	YES	YES	YES
Open SDL Enterprise Systems - Packages (TMS, WorldServer*). * To work with WorldServer packages, first install the WorldServer Compatibility Pack from the RWS AppStore	YES	YES	YES	YES	YES
Trados GroupShare integration					
Open server-based project	NO	YES	YES	YES	YES
Publish to Trados GroupShare (project server)	NO	NO	NO	NO	YES
Productivity features					
upLIFT Fragment Recall	-	YES	YES	YES	YES
upLIFT Fuzzy Repair	-	YES	YES	YES	YES
Upgrade legacy TM formats* *Requires the Trados Compatibility and Migration Power Pack from the RWS AppStore	YES	NO	YES	NO	YES
Upgrade TM from target file	NO	NO	YES	YES	YES
RevlEX TM engine	NO	YES	YES	YES	YES

Features	Express	Starter	Freelance	Workgroup	Professional
Translation Quality Assessment (TQA)	YES, but disabled by default	YES, but disabled by default	YES, but disabled by default	YES	YES
QuickPlace	-	YES	YES	YES	YES
Real-time preview	-	YES	YES	YES	YES
AutoSuggest - Use and Create	YES	YES	YES	YES	YES
PerfectMatch - Use and Create	YES, but disabled by default	YES, but disabled by default	YES, but disabled by default	YES	YES
Access machine translation from the tool	YES	NO *unless the MT string is provided in an Trados Studio package	YES	YES	YES
TM maintenance	NO	NO	YES	NO	YES
Import TMX translation memories * Requires the Trados Compatibility and Migration Power Pack from the RWS AppStore.	NO	YES	YES	YES	YES
Align files	NO	NO	YES	YES	YES
Creation of termbase (add/edit terms)	NO	NO	YES	YES	YES
Use server-based TMs	YES *requires SDL Trados Studio 2017 or higher	YES *only if they are referred to inside an Trados Studio package or used as part of a published Trados GroupShare project	YES	YES	YES

Features	Express	Starter	Freelance	Workgroup	Professional
Update from reviewed target file (Retrofit)	NO	NO	YES	NO	YES
Reports view	NO	NO	YES	YES	YES
Environment					
Works on company networks (domain-based)	NO	NO	NO	YES	YES
Apps from RWS AppStore	NO	NO	YES	YES	YES
Software Development Kits	NO	NO	YES	YES	YES
Includes MultiTerm	NO	NO	YES	YES	YES
Alignment based TM creation	NO	-	YES	YES	YES
License-related					
License type	PERPETUAL	PERPETUAL	PERPETUAL and SUBSCRIPTION	PERPETUAL	PERPETUAL and SUBSCRIPTION
RWS Support Available	NO	NO	YES	YES	YES

Workgroup

If you are working with GroupShare, the server component of Studio, the Trados StudioWorkgroup edition gives you functionality designed for use in GroupShare environments.

Other standard Studio functionality is available with the following limitations:

- You cannot create new projects.
- You cannot publish projects to GroupShare.
- You cannot perform TM maintenance in **Translation Memories** view in Trados Studio.

Upgrade and Compatibility Information

Information for upgraders

If you currently have a previous version of SDL Trados installed, you do not need to uninstall them before installing Trados Studio 2021.

The new version of the software will be installed side-by-side with previous versions of the software.

If you want to install SDL Trados Studio 2019 and Trados Studio 2021 on the same computer, make sure that you install the 2019 version first.

Trados Studio project and package compatibility

All versions of Trados Studio 2021, 2019 and 2017 have the same project and package format.

Translation Memory Compatibility

Software

Trados Studio 2021 can connect to SDL TM Server 2017-2020.

Server-based translation memories

You can use server-based translation memories created in SDL TM Server 2017-2020 directly in Trados Studio 2021.

You can use server-based translation memories created in SDLX Server, SDL TM Server 2007 or earlier versions of this product in Trados Studio 2021 if you first convert them to the current format. To do this, use the **Upgrade Translation Memories** wizard in Trados Studio. For more information, see the [Trados Studio 2021 Migration Guide](#).

Local (file-based) translation memories

You can use local translation memories that were created in SDL Trados 2007, SDLX 2007 or earlier versions of these products in Trados Studio 2021 SR2 if you first convert them to Trados Studio 2021 SR2 format. To do this, use the **Upgrade Translation Memories** wizard in Trados Studio. For more information, see the [Trados Studio 2021 Migration Guide](#).

MultiTerm compatibility

Software

Trados Studio 2021 is compatible with any 2017-2021 version of SDL MultiTerm Desktop.

Trados Studio 2021 can connect to 2017-2020 versions of SDL MultiTerm Server.

Note: Depending on which edition of Trados Studio 2021 you purchased, MultiTerm 2021 may be included in the purchase. However, it is not installed automatically. If you want to install MultiTerm 2021, you must run the MultiTerm 2021 installer. For more information, see the [MultiTerm 2021 Installation Guide](#).

Server-based termbases

You can use server-based termbases that were created in SDL MultiTerm Server 2017-2020 directly in Trados Studio 2021.

Local (file-based) termbases

If you have access to termbases from any version of MultiTerm 2017-2021, you can work with them in Trados Studio 2021.

You can search termbases, insert term translations into documents, add new terms to termbases and edit or delete termbase entries.

Local termbases created in MultiTerm 2009, SDL MultiTerm 2007 (7.5 and 7.x releases) or MultiTerm iX (version 6.x) can also be used in Trados Studio 2021, but they must first be converted to Trados Studio 2021 format.

When you select a termbase from a version previous to SDL MultiTerm 2009 SP3/SP4 in Trados Studio 2021, you are asked if you want the termbase to be converted to MultiTerm 2021 format. When a termbase is converted, the converted termbase file overwrites the original termbase in the same location.

Note:

- Once a termbase has been converted to MultiTerm 2021 format, it cannot be reverted to an earlier format.
 - If you want to work with SDL MultiTerm 2009 (1.0, SP1, SP2), SDL MultiTerm 2007 or MultiTerm iX termbases in Trados Studio 2021 and you also want to be able to open the termbases in the original MultiTerm application, create copies of the termbases before you open them in Trados Studio 2021.
-



Installing Trados Studio 2021

This chapter contains all the information you need to install Trados Studio 2021.

It describes the hardware and software requirements for running Trados Studio 2021 and provides a step-by-step guide to installing Trados Studio 2021.

Overview

This chapter describes the system requirements and installation steps for Trados Studio 2021.

System requirements

To install and run Trados Studio 2021 you need:

Names of components or other non-variables

Content	Description
Cloud-based Terminology	The name of Trados Live Terminology in Studio, as it appears in the UI.
Trados Live Terminology	The name of Trados Live Terminology.

Hardware requirements

- A Microsoft Windows-based PC or an Intel-based Apple Mac computer running Windows as an operating system
- Up to 2.5 GB of available disk space to run the Trados Studio 2021 SR2 installer
- 2 GB of available disk space to run Trados Studio
- A 32-bit (x86) or 64-bit (x64) processor
 - **32-bit (x86) OS**
 - 1 gigahertz (GHz) or faster processor
 - 8 GB RAM
 - A screen resolution of 1280x1024 pixels and 256 colors or higher
 - **64-bit (x64) OS**
 - A recent processor with dual or multi-core technology
 - 8 GB RAM
 - A screen resolution of 1280x1024 pixels and 256 colors or higher

Optimum performance

For optimum performance, RWS recommends using:

- 64-bit operating systems
- a recent processor with dual or multi-core technology
- 16 GB of RAM and SSD storage
- a recent Intel or compatible CPU

Operating systems

Operating Systems

Supported OS

- Trados Studio 2021 SR2 runs on the latest build of Windows 11, Windows 10 and Windows 8.1.
- Trados Studio also supports Windows Server 2019, Windows Server 2016, Windows Server 2012 R2 and Windows Server 2008 R2 to facilitate certain scenarios, for example, where Citrix or Remote Desktop Services are used.

Limited Windows 7 support

Microsoft has stopped support for Windows 7. As a result, we are no longer testing or supporting Trados Studio on Windows 7.

However, if you intend to remain on Windows 7, you may be able to do so successfully for the time being by [enabling TLS 1.2 as default secure protocol](#). Language Cloud (Trados Live) and GroupShare 2017 SR1 and later only accept TLS 1.2 connections to ensure the highest data security when sharing projects on RWS servers.

Unsupported OS

Trados Studio does not support earlier operating systems such as:

- Windows 8
- Windows 7
- Windows Vista
- Windows XP
- Windows 2003 Server

Recommended OS

RWS recommends that you use Windows 10 because it is the current and best supported OS from Microsoft. Windows 11 is also supported as the recent successor of Windows 10.

Software and Internet browsers

Internet Browser

- The new Welcome tab with drag-and-drop capabilities introduced in Trados Studio 2021 is only available on PCs with Microsoft Internet Explorer 10 or later.
- On PCs with Microsoft Internet Explorer 9 or earlier, the old Welcome tab content is displayed.

Trados Studio Help

The Trados Studio Help buttons are context sensitive and redirect to the online deliverable on the RWS Documentation Center. This means that to get access to the latest updated help for Trados Studio you need an Internet connection and one of the following Internet browsers installed:

- Microsoft Internet Explorer 10 and later
- Microsoft Edge
- Google Chrome (latest version)
- Mozilla Firefox (latest version)
- Safari 7 and later

If you need to consult the full product documentation in a location with no Internet access, you can download the WebHelp documentation deliverable, a ZIP file containing all the documentation as static Web pages.

To download the ZIP file, access the following link: [Trados Studio 2021 full documentation as WebHelp deliverable](#). Unpack this ZIP file in a location of your choosing and open `index.html` in an Internet browser.

Please note that the documentation may be subject to change after the product has been released. The live documentation resource at <https://docs.rws.com/TradosStudio> is always the most up-to-date resource.

Digital certificate requirements

All Trados Studio code and installer files are digitally signed.

Make sure your list of approved root certificates is up-to-date and includes the root certificate from the Certification Authority that generates SDL's code signing certificate. At the time of writing, Studio require **DigiCert Assured ID Root CA** and **DigiCert Assured ID Code Signing CA-1**.

- For computers with access to the Internet, go to <https://www.digicert.com> and add the new root certificate to your Trusted Root Certification Authorities certificate store. This is only available for computers running on operating systems supported by Microsoft (Windows Vista or later).
- For computers in a locked down corporate environment without access to the Internet, follow the instructions available at <https://technet.microsoft.com/library/dn265983.aspx>. You can also download the specific root certificates directly from <https://www.digicert.com/digicert-root-certificates.htm> and apply the certificates to each locked down workstation manually or by group policy.

Upgrading from an Earlier Version of Trados Studio

You do not have to uninstall an earlier Trados Studio version before installing Trados Studio 2021.

About the Trados Studio 2021 installer

The installer for Trados Studio 2021 contains the following items:

Included with the installer

- Trados Studio 2021
- **MultiTerm 2021 settings including MultiTerm 2021 Core.** These enable you to work with MultiTerm termbases without having MultiTerm Desktop installed.

Note: MultiTerm Desktop 2021 is not included in the Trados Studio 2021 installer. For more information, see the [MultiTerm 2021 Installation Guide](#).

- **S-Tagger for FrameMaker** and **S-tagger for QuickSilver** framework. These conversion tools enable you to prepare FrameMaker 7 MIF files and Interleaf IASCII files for translation with SDL Translator's Workbench, SDL TagEditor and Word. To enable these two conversion tools, install the **Trados Compatibility and Migration Power Pack** after installing Trados Studio. This is a free app that you can add from the **Add-Ins** tab > RWS AppStore. After installing the app, launch the S-Tagger components from **File > Legacy DTP Formats**.

Prerequisite software

For Trados Studio 2021 SR2 to work, there are a number of other pieces of software that need to be present on your computer. Most of these are also used by other applications and you probably have them already. However, if they are not present, they will be installed automatically. A complete list of the prerequisite software is given below.

Prerequisite software

The Trados Studio 2021 installer will install the following software, if it is not already present on your computer:

- Microsoft .NET Framework 4.8
- Microsoft Visual C++ 2015-2019 Redistributable
- Trados Studio 2021 fully supports all Microsoft Office 2007-2019 and 2000-2003 file formats. You may want to install Microsoft Word and PowerPoint for previewing translated Word and PowerPoint documents. Trados Studio also requires Microsoft Word for spell-checking.
- Microsoft Edge WebView2. WebView 2 is most commonly used in the file Preview functionality of Trados Studio but also in other areas of the application.

Installation location

The default installation location for Trados Studio 2021 components is:

`C:\Program Files (x86)\SDL\SDL Trados Studio`

The `Program Files` folder on your computer may have a different name if you are using a non-English operating system.

About the Trados Studio 2021 installation

Installing Trados Studio 2021 involves the following steps:

1. Install Trados Studio 2021 from [My Account](#)

The installer contains a number of compressed files which Trados Studio decompresses when you start the installation. Next, the actual installation takes place.

2. Activate Trados Studio.

Once installed, you can start Trados Studio 2021. The **Product Activation** dialog box is displayed. Here you can activate your product with a perpetual or subscription license or choose to use the 30 days trial. The trial license runs Trados Studio in Professional mode for 30 days. At the end of 30 days you must activate your own license. If you do not have a valid license at that time, you can no longer use Studio. If you have purchased a Freelance, Starter, Express or Workgroup license, you may want to take advantage of the trial license as it will give you access to more functionality than your own license. For more information, see the **Trados Studio Editions** section.

- If you downloaded the software from **My Account > Products & Plans**, go to the location where you stored the downloaded files and run the installer from there.
- If you are installing the software from a network resource, ask your system administrator for the network location of the Trados Studio 2021 installer setup program.

Installing Trados Studio 2021

The installation routine for Trados Studio 2021 is based on an installation wizard which guides you through the process.

Before you begin

To install Trados Studio 2021, you must have local administrator rights on your computer. Once you install Trados Studio, add it to the trusted programs / exclusions list of your antivirus suite.

Note: The installer also supports administrative and silent installations. You can find instructions for administrative and silent installations in the [Trados Studio 2021 SR2 Enterprise Deployment guide](#). For information on how to contact Customer Support, see <https://gateway.sdl.com>.

Downloading the installer

Procedure

1. Go to [My Account](#), select **Products & Plans > Downloads**.
2. Find the Trados Studio 2021 entry in the product list and select **Download** next to it.
3. Save the installer to a preferred location.

Running the installer

Procedure



1. Run the self-extracting installation executable file. When all of the installation files have been decompressed, the first page of the Trados Studio 2021 installer is displayed.
2. Select **Accept**. The installer files are extracted to your computer. When all of the installer files have been extracted, the License Agreement page is displayed.

Note: If you do not have Microsoft .NET Framework 4.8 installed, this is installed now and you may be asked to restart your computer.

3. Accept the license agreement and select **Next**.
A screen listing all of the components that will be installed is displayed.
4. The installer installs the components and indicates the progress of the installation.
5. When the installation is complete, a confirmation dialog is displayed. Select **OK**.
Trados Studio 2021 is now added to the Windows Start menu under **Trados Studio 2021**.

After Installation

When you first start Trados Studio, the following windows help you set up Trados Studio for first time use: Product Activation and Trados Studio Setup Wizard.

1. The Product Activation dialog, where you can activate Trados Studio or choose to use the 30 days trial. For more information on licensing Trados Studio, click the **Help** button on this dialog or go to the Licensing Help.
2. The Trados Studio Setup wizard, where you can:
 - a. Specify your user details for this instance of Trados Studio. 
 - b. Specify your user profile for this instance of Trados Studio. 

Logging an Installation

The installation is logged automatically. Log files are created here:

```
%ALLUSERSPROFILE%\Application Data\SDL\Chainer\Logs
```

Software updates

Some software updates to the application can be downloaded from within Trados Studio or software updates can be automatically checked for and downloaded when Trados Studio is started.

You can specify how you want Trados Studio to detect application updates or your system administrator can specify a group policy for all users.

Temporary directory

Software updates are downloaded to `C:\Users\user\Downloads`. After the update is installed, you can delete the files from this location.

Individual User Software Updates

An individual user of Trados Studio can do the following:

- Specify that they want to check for software updates when Trados Studio starts. They can do this on the Automatic Updates page of the Options dialog box.
- Manually check for updates by selecting Help > Check for Updates from the ribbon in Trados Studio.

Note: If either of these options is unavailable, the system administrator has set a group policy that disables checking for software updates

Group Policy Software Updates

Trados Studio includes a feature that notifies users of the availability of software updates and gives them the option to install the updates on their own computer. The system administrator can set a group policy that controls the way this feature works. You can choose to:

About this task

- Enable automatic checking for updates. When you choose this option, an automatic check for updates is made every time a user starts the application. When an update is available, the user is prompted to apply the update to their installation.
- Enable user control of checking for updates. When you choose this option, the users can enable automatic checks for updates (these take place whenever the application is started) and they can also check for updates manually at any time. When an update is available, the user is prompted to apply the update to their installation.

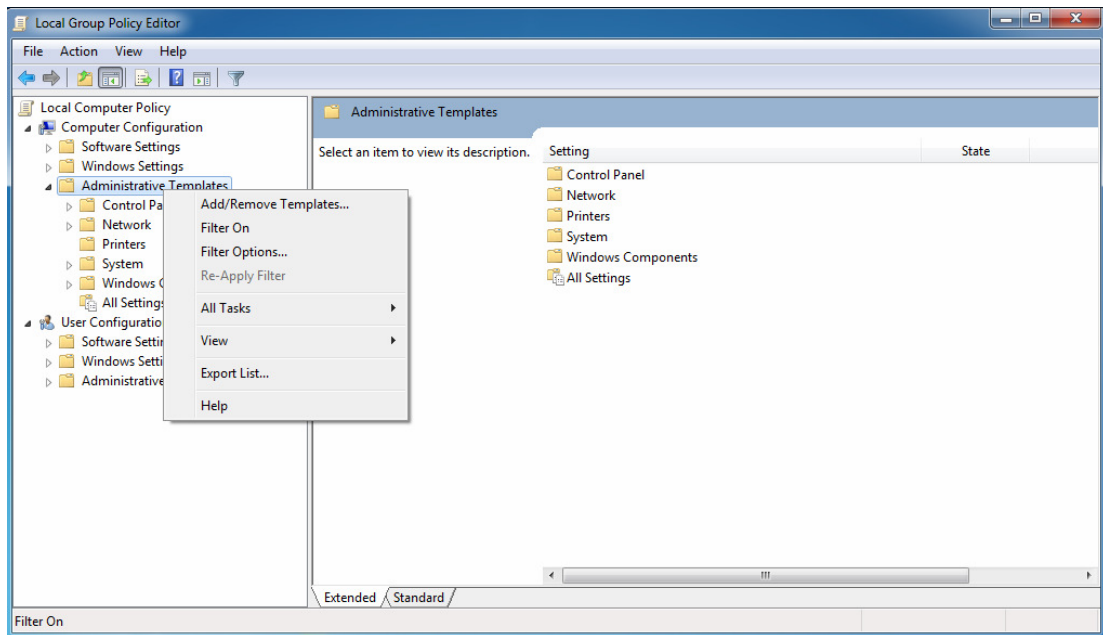
- Disable all checks. This option means that automatic checks for updates will not be performed and users cannot perform manual checks either. You should choose this option if you want to control the application of updates centrally.

You define a group policy by configuring the AutoUpdate.adm file in the **Group Policy** dialog box.

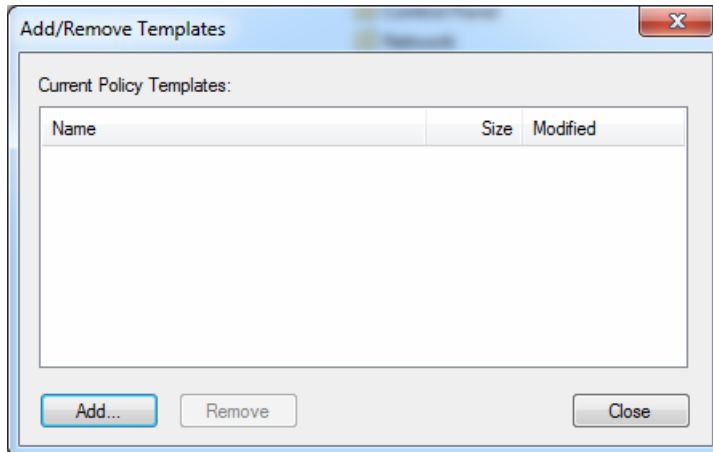
To define a group policy (note that the screenshots here may vary slightly, depending on the operating system that you are using):

Procedure

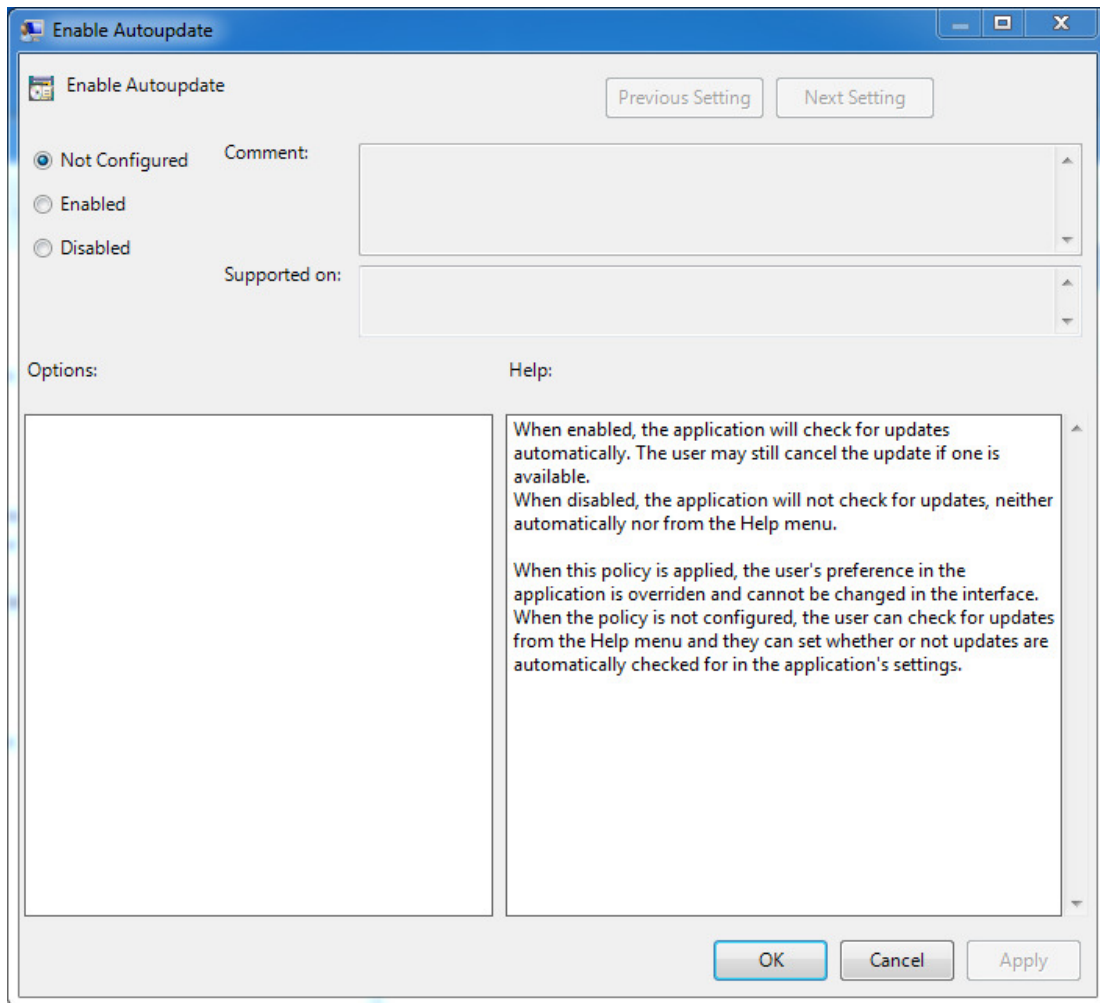
1. Locate the `AutoUpdate.adm` file.
The default location for this file is:
`%ALLUSERSPROFILE%\Package Cache\SDL\SDLTradosStudio2021`
2. Select **Start > Run** and enter the following command:
`gpedit.msc`
3. The Group Policy dialog box is displayed. Right-click on **Computer Configuration > Administrative Templates** and select **Add/Remove Templates** from the shortcut menu.



4. The **Add/Remove Templates** dialog box is displayed. Click **Add** and browse to the location of the `AutoUpdate.adm` file.



5. Click **Close** when the template is added.
6. **Computer Configuration > Administrative Templates > Classic Administrative Templates (ADM) > SDL Applications > SDL Trados Studio 2021** is added to the navigation tree. Select Trados Studio to display its settings on the right.
7. Double-click on the **Enable Autoupdate** setting.
8. The **Enable Autoupdate** dialog box is displayed. Select one of the following options and click **OK** to save the group policy:
 - **Not Configured** - The user can choose to enable or disable checking for application updates automatically when the application starts and can also manually check for application updates.
 - **Enabled** - Trados Studio checks for updates automatically when the application starts. The user cannot disable the automatic updates option. The user can also manually check for application updates.
 - **Disabled** - Automatic checks for application updates and manual checks for updates are disabled. The user cannot enable either of these options.



Logging a Software Update

The update is logged automatically. There are two log files that are created.

The first log file is created when checking for updates and downloading installer for the update. This log file is located here:

```
%ProgramData%\SDL\SDL Trados Studio\Studio16\Updates
```

The other log file is created during the installation of the update and is located here:

```
%temp%\studio16updates
```

Maintaining Your Installation

You can repair or remove your Trados Studio 2021 installation at any time.

Repairing your Trados Studio 2021 Installation

Use the repair feature to repair or restore missing files or registry entries in your installation.

About this task

To repair your installation:

Procedure

1. From the **Start** menu on your computer, select **Control Panel**.
2. In the Control Panel, select **Programs > Uninstall a Program**.
3. Right-click Trados Studio 2021 SR2 on the list of programs and select **Uninstall/ Change**.
4. Select **Repair**.
This starts the Windows Installer which runs the repair process.
5. When the process is complete, select **OK**.

Removing Trados Studio 2021

Before uninstalling, we recommend that you deactivate your product license. To do this, go to **Help > Product Activation** in the application.

About this task

To uninstall:

Procedure

1. From the **Start** menu on your computer, select **Control Panel**.
2. In the Control Panel, select **Programs > Uninstall a Program**.
3. Right-click Trados Studio 2021 SR2 on the list of programs and select **Uninstall/ Change**.
4. Select **Uninstall**.
This starts the Windows Installer which runs the repair process.
5. When the process is complete, select **OK**.

Customer support

To contact Technical Support, connect to the Customer Support Web Portal at <https://gateway.sdl.com> and log a case for your RWS product. You need an account to log a case. If you do not have an account, contact your company's RWS Support Account Administrator.

What's next?

The instructions in the **Trados Studio Video Help Series** and the **Quick Start Guides** will quickly get you started with Trados Studio.

You can access these and more helpful resources at <https://docs.sdl.com/SDLTradosStudio>

If you have some existing translation resources, translation memories for example, you should migrate them to the Trados Studio 2021 format. Converting or upgrading existing translation resources so that you can work with them in Trados Studio 2021 is described in the [Trados Studio 2021 Migration Guide](#)



Acknowledgments

Trados Studio includes open source or similar third-party software.

Crc32C.NET.signed

Version: 1.0.5

Vendor: Robert Važan

Copyright: Copyright (c) 2014-2020, Robert Važan

License type: BSD-3-Clause

License details: <https://github.com/robertvazan/crc32c.net/blob/master/LICENSE>

Microsoft.ApplicationInsights

Version: 2.12.1

Vendor: Microsoft

Copyright: Copyright (c) 2015 Microsoft

License type: MIT

License details: <https://github.com/microsoft/ApplicationInsights-dotnet/blob/2.12.1/LICENSE>

CommandLineParser

Version: 1.9.71

Vendor: Giacomo Stelluti Scala

Copyright: Copyright (c) 2005 - 2013 Giacomo Stelluti Scala

License type: MIT

License details: <https://github.com/commandlineparser/commandline/blob/v1.9.71.2/doc/LICENSE>

Microsoft.AspNet.WebApi.Client

Version: 5.2.7

Vendor: Microsoft

Copyright: © Microsoft Corporation. All rights reserved.

License type: Apache 2.0

License details: <https://github.com/aspnet/AspNetWebStack/blob/v3.2.7/LICENSE.txt>

Microsoft.AspNetCore.SignalR.Client

Version: 1.1.0

Vendor: Microsoft

Copyright: Copyright (c) .NET Foundation and Contributors

License type: Apache 2.0

License details: <https://github.com/aspnet/SignalR/blob/1.1.0/LICENSE.txt>

Microsoft.IdentityModel.Protocol.Extensions

Version: 1.0.4.403061554

Vendor: Microsoft

Copyright: Copyright (c) Microsoft Corporation

License type: MIT

License details:

<https://github.com/AzureAD/azure-activedirectory-identitymodel-extensions-for-dotnet/blob/dev/LICENSE.txt>

System.IdentityModel.Tokens.Jwt

Version: 6.11.1.0

Vendor: Microsoft

Copyright: © Microsoft Corporation. All rights reserved.

License type: MIT

License details:

<https://github.com/AzureAD/azure-activedirectory-identitymodel-extensions-for-dotnet/blob/dev/LICENSE.txt>

Microsoft.IdentityModel.Tokens

Version: 6.11.1.0

Vendor: Microsoft

Copyright: © Microsoft Corporation. All rights reserved.

License type: MIT

License details:

<https://github.com/AzureAD/azure-activedirectory-identitymodel-extensions-for-dotnet/blob/6.7.1/LICENSE.txt>

YamlDotNet

Version: 8.1.1.0

Vendor: Antoine Aubry

Copyright: Copyright (c) Antoine Aubry and contributors 2008 - 2019

License type: MIT

License details: <https://github.com/aaubry/YamlDotNet/blob/v8.1.2/LICENSE.txt>

NETStandard.Library

Version: 2.0.3

Vendor: Microsoft

Copyright: Copyright (c) .NET Foundation and Contributors

License type: MIT

License details: <https://github.com/dotnet/standard/blob/v2.0.3/LICENSE.TXT>

Autofac

Version: 4.8.1

Vendor: Autofac

Copyright: Copyright © 2015 Autofac Contributors

License type: MIT

License details: <https://github.com/autofac/Autofac/blob/v4.8.1/LICENSE>

HtmlAgilityPack

Version: 1.11.34.0

Vendor: ZZZ Projects

Copyright: Copyright © ZZZ Projects Inc.

License type: MIT

License details: <https://github.com/zzzprojects/html-agility-pack/blob/v1.11.16/LICENSE>

Xliff.OM

Version: 1.0.2

Vendor: RyanKi

Copyright: Copyright 2016 RyanKi

License type: MIT

License details: <https://github.com/microsoft/XLIFF2-Object-Model/blob/master/LICENSE.txt>

murmurhash-signed

Version: 1.0.3.0

Vendor: Darren Kopp

Copyright: Copyright 2013 Darren Kopp

License type: Apache 2.0

License details: <https://github.com/darrenkopp/murmurhash-net/blob/master/LICENSE.md>

System.IO.Abstractions

Version: 13.2.38.0

Vendor: Tatham Oddie

Copyright: Copyright © Tatham Oddie 2010

License type: MIT

License details:

<https://github.com/System-IO-Abstractions/System.IO.Abstractions/blob/v4.2.17/LICENSE>

Flee

Version: 1.2.2

Vendor: Muhammet Parlak

Copyright: Copyright 2017 Muhammet Parlak

License type: L-GPL

License details: <https://github.com/mparlak/Flee>

PowerCollections

Version: 1.0.0.0

Vendor: Wintellect

Copyright: Copyright 2015 Wintellect

License type: EPL

License details: <https://www.nuget.org/packages/Stakata.Wintellect.PowerCollections/1.0.4/License>

ANTLR 3 Runtime

Version: 3.1.3

Vendor: Terence Parr

Copyright: Copyright (c) 2011 The ANTLR Project

License type: BSD

License details: <https://github.com/antlr/antlr3/blob/master/LICENSE.txt>

CachedImage

Version: 0.1.8

Vendor: Haridas Pachuveetil

Copyright: Copyright (c) 2014 Haridas Pachuveetil

License type: MIT

License details: <https://github.com/floydpink/CachedImage/blob/main/LICENSE>

Microsoft.AspNetCore.JsonPatch

Version: 5.0.7

Vendor: Microsoft

Copyright: © Microsoft Corporation. All rights reserved.

License type: Apache 2.0

License details: <https://github.com/dotnet/aspnetcore/blob/1.1.1/LICENSE.txt>

Microsoft.Extensions.DependencyInjection.Abstractions

Version: 5.0.0.0

Vendor: Microsoft

Copyright: © Microsoft Corporation. All rights reserved.

License type: MIT

License details:

<https://github.com/dotnet/extensions/blob/9bc79b2f25a3724376d7af19617c33749a30ea3a/LICENSE.txt>

Microsoft.Extensions.DependencyModel

Version: 2.0.4

Vendor: Microsoft

Copyright: Copyright (c) .NET Foundation and Contributors

License type: MIT

License details: <https://github.com/dotnet/core-setup/blob/v2.0.4/LICENSE.TXT>

Microsoft.IdentityModel.JsonWebTokens

Version: 6.11.0.0

Vendor: Microsoft

Copyright: Copyright (c) .NET Foundation and Contributors

License type: MIT

License details:

<https://github.com/AzureAD/azure-activedirectory-identitymodel-extensions-for-dotnet/blob/5.6.0/LICENSE.txt>

Microsoft.IdentityModel.Logging

Version: 6.11.1.0

Vendor: Microsoft

Copyright: Copyright (c) .NET Foundation and Contributors

License type: MIT

License details:

<https://github.com/AzureAD/azure-activedirectory-identitymodel-extensions-for-dotnet/blob/5.6.0/LICENSE.txt>

log4net

Version: 2.0.8

Vendor: The Apache Software Foundation

Copyright: Copyright 2004-2017 The Apache Software Foundation

License type: Apache 2.0

License details: <https://github.com/apache/logging-log4net/blob/rel/2.0.8/LICENSE>

Markdig.Signed

Version: 0.18.3

Vendor: Alexandre Mutel

Copyright: Copyright (c) 2018-2019, Alexandre Mutel

License type: BSD-2-Clause

License details: <https://github.com/xoofx/markdig/blob/0.18.3/license.txt>

NLog

Version: 4.6.7

Vendor: Jarek Kowalski, Kim Christensen, Julian Verdurmen

Copyright: Copyright (c) 2004-2020 NLog Project - <https://nlog-project.org/>

License type: BSD-3-Clause

License details: <https://github.com/NLog/NLog/blob/v4.6.7/LICENSE.txt>

SharpZipLib

Version: 1.2.0

Vendor: ICSharpCode

Copyright: Copyright © 2000-2018 SharpZipLib Contributors

License type: MIT

License details: <https://github.com/icsharpcode/SharpZipLib/blob/v1.2.0/LICENSE.txt>

System.Data.SQLite

Version: 1.0.111.0

Vendor: SQLite

Copyright: Public domain

License type: Public domain

License details: <https://www.sqlite.org/copyright.html>

ICU

Version: 59.1.15.0

Vendor: SIL International

Copyright: Copyright (c) 2016-2017 SIL International

License type: ICU

License details: <https://github.com/unicode-org/icu/blob/release-59-1/icu4c/LICENSE>

DocumentFormat.OpenXml

Version: 2.8.1

Vendor: Microsoft

Copyright: © Microsoft Corporation. All rights reserved.

License type: MIT

License details: <https://github.com/OfficeDev/Open-XML-SDK/blob/v2.8.1/LICENSE>

System.ValueTuple

Version: 4.5.0

Vendor: Microsoft

Copyright: © Microsoft Corporation. All rights reserved.

License type: MIT

License details: <https://github.com/dotnet/corefx/blob/master/LICENSE.TXT>

System.Collections.Immutable

Version: 5.0.0

Vendor: Microsoft

Copyright: © Microsoft Corporation. All rights reserved.

License type: MIT

License details: <https://github.com/dotnet/runtime/blob/v5.0.0/LICENSE.TXT>

System.Reactive

Version: 4.3.2

Vendor: .NET Foundation and Contributors

Copyright: Copyright (c) .NET Foundation and Contributors.

License type: MIT

License details: <https://github.com/dotnet/reactive/blob/rxnet-v4.3.2/LICENSE>

Newtonsoft.Json

Version: 12.0.2

Vendor: James Newton-King

Copyright: Copyright © James Newton-King 2008

License type: MIT

License details: <https://github.com/JamesNK/Newtonsoft.Json/blob/12.0.2/LICENSE.md>

SmartThreadPool

Version: 2.2.6.0

Vendor: Ami Bar

Copyright: Copyright © Ami Bar

License type: MS-PL

License details: <https://github.com/amibar/SmartThreadPool/blob/v2.2.6/LICENSE>

SimpleInjector

Version: 5.3.0.0

Vendor: Simple Injector Contributors

Copyright: Simple Injector Contributors 2010 - 2020

License type: MIT

License details: <https://github.com/simpleinjector/SimpleInjector/blob/v4.9/LICENSE>

Microsoft.Xaml.Behaviors.Wpf

Version: 1.1.19.0

Vendor: Microsoft

Copyright: © Microsoft Corporation. All rights reserved.

License type: MIT

License details: <https://github.com/microsoft/XamlBehaviorsWpf/blob/v1.1.19/LICENSE>

Microsoft.Extensions.Logging.Abstractions

Version: 5.0.0.0

Vendor: Microsoft

Copyright: © Microsoft Corporation. All rights reserved.

License type: MIT

License details: <https://github.com/dotnet/extensions/blob/2.2.0/LICENSE.txt>

MaterialDesignThemes.MahApps

Version: 0.0.11

Vendor: James Willock

Copyright: Copyright 2015 James Willock/Mulholland Software Ltd

License type: MS-PL

License details: <https://www.nuget.org/packages/MaterialDesignThemes.MahApps/0.0.11>

OpenXmlPowerTools

Version: 4.5.3.0

Vendor: Eric White

Copyright: Copyright © Eric White

License type: MIT

License details: <https://github.com/OfficeDev/Open-Xml-PowerTools/blob/vNext/LICENSE>

WatiN

Version: 2.1.0.0

Vendor: Jeroen van Menen

Copyright: Copyright © Jeroen van Menen

License type: Apache 2.0

License details: <https://www.nuget.org/packages/WatiN/2.1.0>

System.Threading.Tasks.Extensions

Version: 4.5.4.0

Vendor: Microsoft

Copyright: © Microsoft Corporation. All rights reserved.

License type: MIT

License details: <https://github.com/dotnet/corefx/blob/master/LICENSE.TXT>

System.Security.Cryptography.X509Certificate

Version: 4.3.2.0

Vendor: Microsoft

Copyright: © Microsoft Corporation. All rights reserved.

License type: MIT

License details: <https://github.com/dotnet/corefx/blob/master/LICENSE.TXT>

System.Security.Cryptography.Algorithms

Version: 4.3.1.0

Vendor: Microsoft

Copyright: © Microsoft Corporation. All rights reserved.

License type: MIT

License details: <https://github.com/dotnet/corefx/blob/master/LICENSE.TXT>

System.Reflection.TypeExtensions

Version: 4.7.0.0

Vendor: Microsoft

Copyright: © Microsoft Corporation. All rights reserved.

License type: MIT

License details: <https://github.com/dotnet/corefx/blob/master/LICENSE.TXT>

System.Linq.Queryable

Version: 4.3.0.0

Vendor: Microsoft

Copyright: © Microsoft Corporation. All rights reserved.

License type: MIT

License details: <https://github.com/dotnet/corefx/blob/master/LICENSE.TXT>

System.IO.FileSystem.Primitives

Version: 4.3.0.0

Vendor: Microsoft

Copyright: © Microsoft Corporation. All rights reserved.

License type: MIT

License details: <https://github.com/dotnet/corefx/blob/master/LICENSE.TXT>

System.Memory

Version: 4.5.4.0

Vendor: Microsoft

Copyright: © Microsoft Corporation. All rights reserved.

License type: MIT

License details: <https://github.com/dotnet/corefx/blob/master/LICENSE.TXT>

System.Numerics.Vectors

Version: 4.5.0.0

Vendor: Microsoft

Copyright: © Microsoft Corporation. All rights reserved.

License type: MIT

License details: <https://github.com/dotnet/corefx/blob/master/LICENSE.TXT>

System.Buffers

Version: 4.5.1.0

Vendor: Microsoft

Copyright: © Microsoft Corporation. All rights reserved.

License type: MIT

License details: <https://github.com/dotnet/corefx/blob/master/LICENSE.TXT>

System.Runtime.CompilerServices.Unsafe

Version: 5.0.0.0

Vendor: Microsoft

Copyright: © Microsoft Corporation. All rights reserved.

License type: MIT

License details: <https://github.com/dotnet/corefx/blob/master/LICENSE.TXT>

SharpCompress

Version: 0.26.0

Vendor: Adam Hathcock

Copyright: Adam Hathcock

License type: MIT

License details: <https://github.com/adamhathcock/sharpcompress/blob/0.26/LICENSE.txt>

Sdl.MultiSelectCombobox

Version: 1.0.17

Vendor: RWS

Copyright: Copyright © RWS

License type: Apache 2.0

License details: <https://github.com/sdl/Multiselect-ComboBox/blob/master/LICENSE>

Microsoft.WindowsAPICodePack.Shell

Version: 1.1.0.0

Vendor: NanaLich

Copyright:

License type:

License details:

icu.net

Version: 2.7.1.0

Vendor: SIL International

Copyright: Copyright © 2007-2019 SIL International

License type: MIT

License details: <https://github.com/sillsdev/icu-dotnet/blob/v2.5.4/LICENSE>

Microsoft.Extensions.Http

Version: 5.0.0.0

Vendor: Microsoft

Copyright: © Microsoft Corporation. All rights reserved.

License type: Apache 2.0

License details: <https://github.com/aspnet/HttpClientFactory/blob/2.2.0/LICENSE.txt>

MahApps.Metro

Version: 1.5.0

Vendor: Jan Karger, Dennis Daume, Brendan Forster, Paul Jenkins, Jake Ginnivan, Alex Mitchell

Copyright: Copyright © 2021 .NET Foundation and Contributors. All rights reserved.

License type: MIT

License details: <https://github.com/MahApps/MahApps.Metro/blob/1.5.0/LICENSE>

NQuant

Version: 1.0.3

Vendor: Matt Wrock

Copyright: Copyright Matt Wrock 2011

License type: Apache 2.0

License details: <https://github.com/philjones/nquant/blob/master/License.txt>